








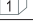
PLATO FRANKFURT FRANKFURT PLATE

Plato de Acero montado con fijaciones (Colas de Milano) tipo frankfurt, necesario para utilizar todos los productos de la familia Frankfurt.

Steel plate mounted with couplings (Frankfurt type), necessary to use all the products of the Frankfurt family

Ref. 011402

MATERIALES / MATERIALS	MÁQUINAS / MACHINES	SECTOR / SECTOR
<ul style="list-style-type: none"> ✓ MÁRMOL / MARBLE ✓ TERRAZO / TERRAZZO ✓ GRANITO / GRANITE ✓ HORMIGÓN / CONCRETE 	 	<div style="border: 1px solid black; padding: 5px; text-align: center;"> TALLER DE PIEDRA STONE FABRICATOR </div>

MEDIDA / MEASURE	COLA DE MILANO ALUMINIO ALUMINIUM COUPLING	FIJACION / COUPLING	€/UD.	UD./BOX
270 mm – (10,6")	3	Gómez	166,42	
320 mm – (12,6")	4	Canigó	212,00	
350 mm – (13,8")	4	A medida	212,00	
400 mm – (15,7")	6	Sin Enganche	272,42	

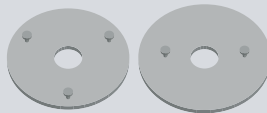
TECNOLOGIAS / TECHNOLOGIES

Platos con **fijaciones universales** tipo Frankfurt, con **enganche rápido**, adaptables a todos los productos de la familia Frankfurt.

Frankfurt type **universal connection** plates, with **quick coupling**, adaptable to all products of the Frankfurt family.



Posibilidad de fabricar **cualquier tipo de fijación o enganche** sobre la parte posterior del plato, adaptándonos a todas las máquinas del mercado.



Possibility of manufacturing **any type of attachment or hooking** on the back of the plate, adapting to all the machines on the market.

Fijación universal tipo Frankfurt, con **enganche rápido**, adaptable a todas las máquinas del mercado.

Universal fastening type Frankfurt, with **quick coupling**, adaptable to all machines on the market.

